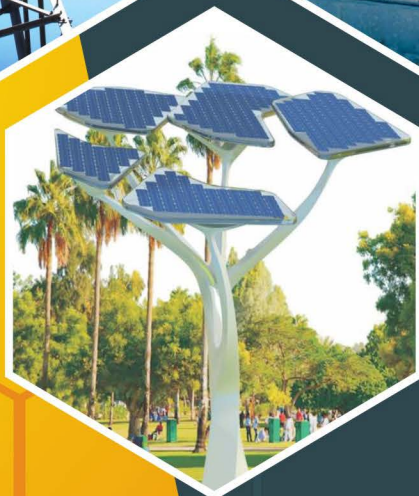


STAR RISING

ENERGY PVT. LTD.



EPC SOLUTION PROVIDER

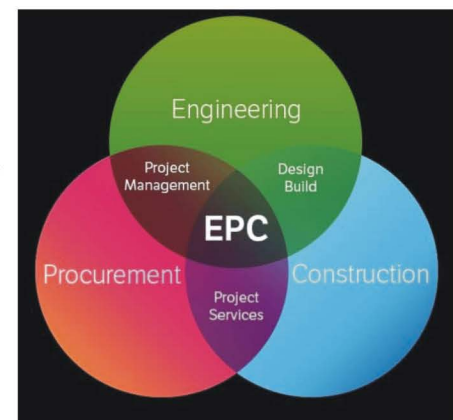
SREPL EPC SOLUTION

Introduction

SREPL has more than a decade experience in providing Engineering and Construction (EPC) solutions in the area of GIS and AIS Substations, Overhead as well as Underground Power Transmission and Distribution System and Railway Electrification/ Substation on Turnkey basis. . The Organization has good experience in execution and has a track record of delivering the projects with superior quality within the time schedule under all kind of environment. SREPL is providing EPC solution in India as well as in overseas

The main services offered by the EPC wing include Design, Engineering, Supply, Erection, Testing and Commissioning of

- High Voltage & Extra High Voltage Underground Cabeling Projects from 11 kV to 132 Kv
- Conversion of Overhead Line to Underground Line for complete town including HT & LT Distribution System
- Rural Electrification Projects under Schemes of Government of India
- Substations (AIS & GIS) on Turnkey basis
- International Rural Electrification Project & Substation Projects
- Metro & Smart City Projects
- Railways Electrification including Traction Substations





Milestone





**We Are
Here**



Contact us for any Query



Star Rising Energy Pvt. Ltd.
Plot No.6, Road No.17, Vishwakarma Industrial Area,
Jaipur, Rajasthan - 302013 (INDIA)



ceo@starrising.co.in
md@starrising.co.in
geetsrepl@gmail.com



+91 - 141-4811200
+91 - 92518 00100
+91 - 94140 20656
+91 - 85020 06788

Visit us at :
www.starrising.in, www.sreplgroup.com



STAR RISING
ENERGY PVT. LTD.



**GRP (SMC) SECTIONAL
PANEL TANKS**

Confidence of Quality
Assurance of Superior Technology





SREPL has a legacy of pursuing the highest standards of engineering. Thus at Star Rising we incorporate proven technologies and adhere to international quality standards, manufacturing world class products from Sheet Moulding Compounds (SMC). The Company draws heavily from research, development and technical innovation to maintain product superiority in the market place. Today, Star Rising is synonymous with technical excellence, world-class quality and manufacturing efficiency.

FUNCTIONAL BENEFITS

The primary benefit offered by the Star Rising Sectional Panel Tank is the assurance of excellent quality of stored water over a long period of time, ensuring the highest level of hygiene.

Retardation of micro-organism of algae growth : By using high-quality corrosion-resistant panels the inner surface of the tank is kept extremely smooth. This prevents mass and algae growth.

The covered tanks block light from outside and ensure that micro-organism growth is minimal.

Checks sedimentary accumulation : Smooth dome-shaped base panels and drain panels and complete drainage of water, preventing the accumulation of sediments, thus improving hygiene levels.

Protection from external contamination :

Water tight design of the panels eliminates water seepage.

Protection from weathering : Proven mechanical properties of the material and UV stabilized material of construction ensure minimal impact from the destructive effects of weather.

Proven mechanical properties of the material and UV stabilized material of construction ensure minimal impact from the destructive effects of weather.



8 KL – 4m x 2m x 1m



100 KL - 10m x 5m x 2mm (2 Nos.)



15 KL - 5m x 3m x 1m



8 KL - 4m x 2m x 1m



60 KL - 6m x 5m x 2m



10 KL - 4 m x 2.5 m x 1 m



PRODUCT ADVANTAGES & AREAS OF APPLICATION

Star Rising Sectional Panel Tanks offer the following Inherent advantages to the end-user :

- Long Service life.
- High-strength to- weight ratio.
- Quick, easy installation & commissioning
- Consistent and proven mechanical properties.
- Excellent resistance to ultraviolet radiation.
- Good resistance to ultraviolet radiation.
- Good resistance to most chemicals.
- Uniformity of panel dimensions.
- Smooth internal and external finish.
- Good paint ability of external surface.
- Minimal requirement of maintenance.

AREAS OF APPLICATION :

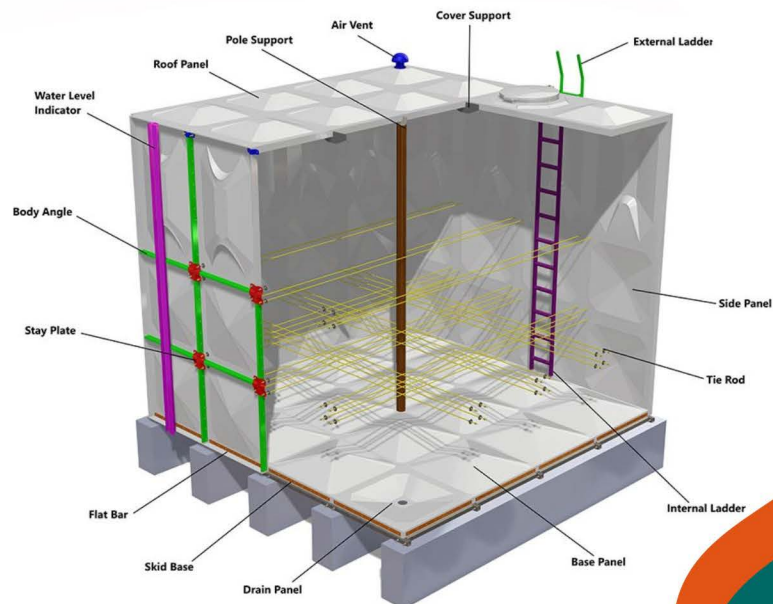
- Multi-staired residential buildings &
- Office complexes.
- Malls
- Railways
- Hospitals
- Hotels & Resorts
- Mass Housing Projects
- IT Parks
- SEZs
- Reverse Osmosis Plants, Effluent Treatment Plants,
- Sewage Treatment Plants.

	RCC	STEEL	SMC SECTIONAL PANEL TANK
Dead load or self weight	Very High	High	Almost 1/4th of Steel
Base Support	Heavy support required	Heavy duty skid mounting	Self supported base with light duty skid mounting
Mechanical Properties	Good	Good	Exceptional strength to weight ratio
Insulation	Good	Bad	Thermal conductivity almost 1/240th of steel hence stored water remains cooler.
Hygiene	Rough internal surface allows bacteria to nest & Proliferate Not airtight hence entry of dust in the tank.	High prone to rust contaminations No airtight	Hygienically the best with smoother surface airtight sealing system thus airtight
Ease of Cleaning	Incomplete & Poor drainage results in build up of residual water that harbour contaminants	Cleaning difficult & hazardous	Easy cleaning with 2 lines for total drainage of water
Flexibility	None	None	Modular concept offers max. flexibility for capacity enhancement.
Aesthetics	Aesthetically positive designs possible	Poor	Aesthetically positive soothing colour.



Star Rising Energy Pvt.Ltd. (Composite Divison)

Specialised in manufacturing of SMC Products established In Year 2000
Wide Range of Products for Electrical Industry & Industrial Applications



Contact us for any Query



Star Rising Energy Pvt. Ltd.
Plot No.6, Road No.17, Vishwakarma Industrial Area,
Jaipur, Rajasthan - 302013 (INDIA)



ceo@starrising.co.in
md@starrising.co.in
geetsrepl@gmail.com



+91 - 141-4811200
+91 - 92518 00100
+91 - 94140 20656
+91 - 85020 06788



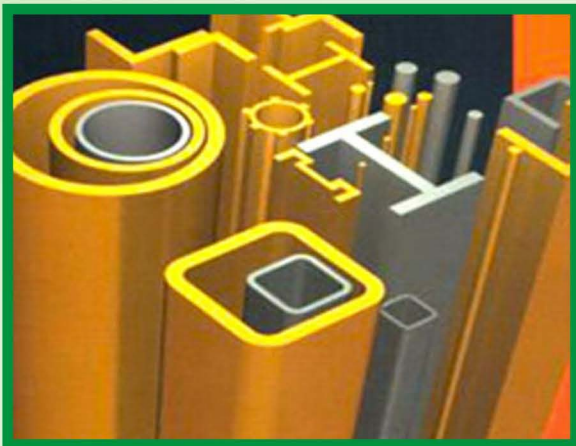
STAR RISING
ENERGY PVT. LTD.

Visit us at :
www.starrising.in, www.sreplgroup.com



Reinforcing the nature ...

STAR RISING ENERGY PVT. LTD.



FRP / PULTRUDED PRODUCTS & SECTIONS



Properties of FRP Pultruded Products.

- Light Weight
- Non Corrosive
- Non Magnetic
- Easy to Maintain
- Heat Resistant
- Impact Resistant



Advantages

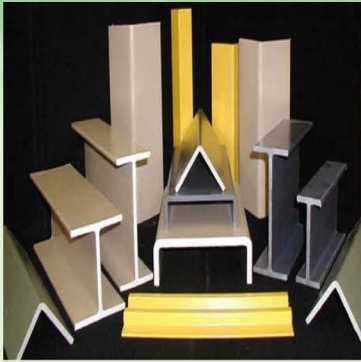
- Corrosion Resistant
- Weather Resistant
- Light Weight
- High Strength
- Electromagnetic Transparency
- Non-conductive
- Electrically Insulating
- Easy to Fabricate & Install
- High Dimensional Stability
- Flame retardant



Application Industries

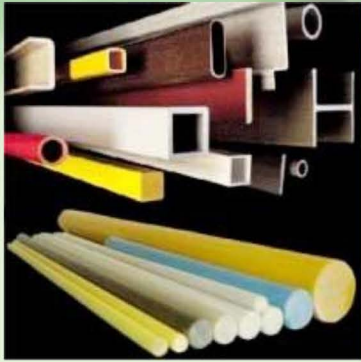
- Refineries
- Offshore Platforms
- Oil & Gas Industry
- Effluent Treatment Plants
- Power Plants
- Electricity Distribution
- Manufacturing
- Aerospace & Aeronautical
- Marine & Shipping
- Foot Bridges
- Swimming Pools
- Construction
- Outdoor Construction Panels





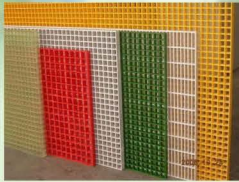
Pultruded Structural shapes are good alternative over conventional metal structures shapes & offers ideal solution against corrosion problems failed in industrial environment.

APPLICATION :
Walkways, Platforms, Columns, Trusses, Structural supports, purlins



Various types of pultruded arms, Rods, Flats, Corners & end pieces offers you very good electrical insulation property in combination with high mechanical strength corrosion resistance & all weather resistance for indoor & outdoor applications. These variety of pultruded products are available with Polyester, Vinylester & Epoxy Resins.

APPLICATION :
Bus bar support, Dry type transformer spacers, 11 KV/33 KV Cases Arms & Other electrical insulation requirements.

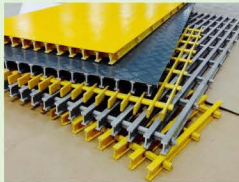


GRATINGS

Pultruded Gratings are manufactured by assembly of pultruded I-Beam & pultruded cross rods. The distance between I-Beam & Cross Rods depend upon various load conditions. Pultruded Gratings offers advanced solution against critical problem of corrosion in industrial environment.

APPLICATION :
Chemical Plants, Refineries Power Plants, Marine & Offshore Installations, Effluent Treatment Plants.

I-Beam Size	Cross Rod Distance	Recommended Load
25 mm	10 Kg./mtr.	300 Kg./Sq.mtr.
25 mm	12 Kg./mtr.	400 Kg./Sq.mtr.
25 mm	15 Kg./mtr.	400 Kg./Sq.mtr.
25 mm	18 Kg./mtr.	750 Kg./Sq.mtr.
40 mm	25 Kg./mtr.	750 Kg./Sq.mtr.
40 mm	30 Kg./mtr.	1000 Kg./Sq.mtr.
40 mm	40 Kg./mtr.	1500 Kg./Sq.mtr.
40 mm	45 Kg./mtr.	2500 Kg./Sq.mtr.
40 mm	50 Kg./mtr.	500 Kg./Sq.mtr.



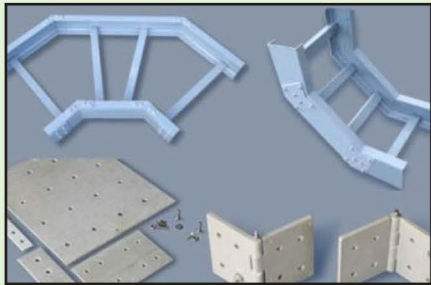
We are developing Ladders with fibreglass or Aluminium steps to satisfy the requirement of clients. These ladders are available in different colours & up to 35 feet length.

APPLICATION :
Wall supported ladders, Stairways, Working Platforms, Monkey ladders with or without cage.



CABLE TRAYS - PERFORATED / SOLID BOTTOM CHANNEL TYPE :

Perforated cable trays are available in drilled / perforated channels. Solid Bottom trays are available as straight channels as per required width, height and thickness. Both type of cable trays are designed for 1500/3000 mm support span. Both type of cable trays are available in different collar heights thickness and colours.



STANDARD SPECIFICATIONS AVAILABLE AS PER TABLE GIVEN BELOW:

Inside Width	Load Design	Material Choice
50 mm	10 Kg./mtr.	Polyester / Vinyl
75 mm	12 Kg./mtr.	Polyester / Vinyl
100 mm	15 Kg./mtr.	Polyester / Vinyl
150 mm	18 Kg./mtr.	Polyester / Vinyl
200 mm	25 Kg./mtr.	Polyester / Vinyl
300 mm	30 Kg./mtr.	Polyester / Vinyl
450 mm	40 Kg./mtr.	Polyester / Vinyl
500 mm	45 Kg./mtr.	Polyester / Vinyl
600 mm	50 Kg./mtr.	Polyester / Vinyl



LADDER TYPE:

Ladder Type cable trays are offered by assembling different types of combinations of pultruded cross sections, side runners & rungs. The rugs are epoxy bonded and fastened to demonstrate high strength against point, side & uniform loads.. Ladder type cable trays are designed for support span of 3000 mm. Ladder Type trays are designed for a point load of 70 kgs. and uniform load with factor of safety 1.5 to 2.0.



STANDARD SPECIFICATIONS AVAILABLE AS PER TABLE GIVEN BELOW:

Width	Side Runner Ht.	Rung Width	Design Load UDL	Material
100 mm	77 / 100 / 150	50 mm	10 Kg./mtr.	Polyester / Vinyl
150 mm	77 / 100 / 150	75 mm	12 Kg./mtr.	Polyester / Vinyl
200 mm	77 / 100 / 150	100 mm	15 Kg./mtr.	Polyester / Vinyl
250 mm	77 / 100 / 150	150 mm	18 Kg./mtr.	Polyester / Vinyl
300 mm	77 / 100 / 150	200 mm	25 Kg./mtr.	Polyester / Vinyl
400 mm	77 / 100 / 150	300 mm	30 Kg./mtr.	Polyester / Vinyl
450 mm	77 / 100 / 150	450 mm	40 Kg./mtr.	Polyester / Vinyl
500 mm	77 / 100 / 150	500 mm	45 Kg./mtr.	Polyester / Vinyl
600 mm	77 / 100 / 150	600 mm	50 Kg./mtr.	Polyester / Vinyl



Contact us for any Query



Star Rising Energy Pvt. Ltd.
Plot No.6, Road No.17, Vishwakarma Industrial Area,
Jaipur, Rajasthan - 302013 (INDIA)



ceo@starrising.co.in
md@starrising.co.in
geetsrepl@gmail.com



+91 - 141-4811200
+91 - 92518 00100
+91 - 94140 20656
+91 - 85020 06788

Visit us at :

www.starrising.in, www.sreplgroup.com



STAR RISING
ENERGY PVT. LTD.

ISOLATORS AND DISCONNECTORS



AN OVERVIEW

M/s **Star Rising Energy Private Limited** is the Jaipur (Rajasthan) based Manufacturing / Supply Company. We are the team professionals who understands what the customer needs and are trying to full-fill those requirements in appropriate spa of time with suitable price. We believe in "Supply quality products at the best prices" and Our Moto is "YOUR GROWTH IS OUR BUSINESS".

SREPL Philosphy :



Harmony

SREPL is committed to providing quality products and excellent service to satisfy all its customers and pursue harmony between its employees, customer and the society, **SREPL** Philosophy :

Responsibility :

SREPL responds to the quality of work life and society and share the success with our customers, employees and society

Innovation :

SREPL keeps Improving ideas, products, techniques, processes, management and services for continued growth

ETHICS & VALUES :

How we do our work is just as important as what we do. Our uncompromising values are key to our sustained success.

They guide our behavior and ensure we put the needs of those we serve at the centre of all we do.

At Star Rising Energy Pvt. Ltd., Our values will guide us to make every decisions, every day in the right way.

UNQUESTIONABLE TRUST :

Honesty, respect, fairness and integrity drive our behaviour. We keep our promises and ethical behavior is our standard

Safety First :

We believe the safety of our employees and customers is paramount. We will perform and maintain every job, every day safety.

Superior Performance :

We are dedicated to superior performance throughout our business. We will continue our strong focus on innovative solutions, improving how we run our business and our commitment to environmental stewardship.

Total Commitment :

We are committed to the success of our employees our customers, our shareholders and our communities. We fully embrace, respect and vaue our differences and diversity.

Code of Ethics:

Our Code of Ethics defines our culture. It guides behavior and makes our values come to life everyday.

Mission :

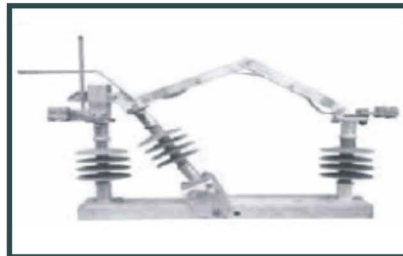
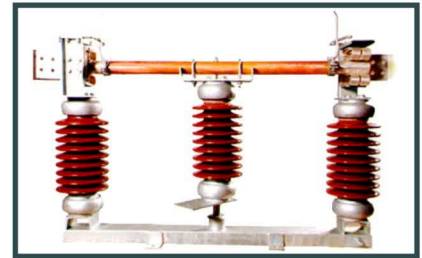
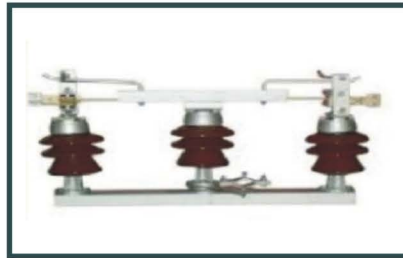
SREPL aims to contribute significantly to the growth of the electrical power and distribution industry of the region. We like to work through our deadlines with the goal of delivering the switchgear consistently on time. Our target is to produce switchgear, Surge Arestor, Plastic Composite, Plastic Enclosure, Hardware, Fabrication of exception quality, provide reliable solutions through the manufacture and supply of innovatively designed, cutting edge technology. We improve our customers profits and productivity by providing the finest quality steel products, the best service and the strongest customer support in the industry. We focus on operating our business through our core values. The rewards will be increased sales, profit and value creation, allowing our people and the communities in which we live and work to prosper.

Vision :

- Stand up to the challenges of the phenomenal growth prospects of the energy needs in the region.
- Empower and enhance our manufacturing expertise to achieve the production volumes and quality standards to face such challenges.
- Provide our customers with the best solutions and fabrication experience from beginning to end, with a smart mind-set and on time-delivery.

Frankly we don't settle for anything less than excellence in every department of our company. We pride ourselves n having the integrity to admit when we're wrong and the courage to change.

AIR BREAK SWITCHES



Maximum System Voltage	Centre Break	Double Break	Earth Switch	Air Break Switch
Maximum System Voltage	33-420 kV	11-420 kV	11-420 kV	11-36 kV
Rated Current	100-4000 A	100-4000 A	100-4000 A	200-800 A
Mounting Options	Horizontal, Underhung	Horizontal, Vertical Underhung	Horizontal	Horizontal, Vertical
Earth Switch	Single, Double	Single, Double	n/a	n/a
Short - time withstand	Upto 40 kA/3s	Upto 50 kA/1s	Upto 50 kA/1s	Upto 31.5 kA/3s
Special Purpose	Tandem arrangement	Tandem arrangement, Double Isolator	Tandem arrangement	Arc Chutes, Arc Chambers
Galvannised Structures	Yes (Pipe type, Angle Type)	Yes (Pipe type, Angle Type)	Yes (Pipe type, Angle Type)	Yes (Pipe type, Angle Type)

Isolator / Disconnecter



TECHNICAL SPECIFICATION OF ISOLATORS

S.No.	Type	400 KV	220 KV.	132 KV	33 KV
1.	Main Switch	HCB		DBCR	
2.	Service	Outdoor			
3.	Applicable standard	IS : 9921 / IEC-129 / IEC-62271-102			
4.	Pole	3 pole gang operator			
5.	Rated voltage nominal/maximum	400 / 420	220 / 245	132 / 145	33 / 36
6.	Rated Frequency	50 HZ \pm 5%			

Contact us for any Query



Star Rising Energy Pvt. Ltd.
Plot No.6, Road No.17, Vishwakarma Industrial Area,
Jaipur, Rajasthan - 302013 (INDIA)



ceo@starrising.co.in
md@starrising.co.in
geetsrepl@gmail.com



+91 - 141-4811200
+91 - 92518 00100
+91 - 94140 20656
+91 - 85020 06788

Visit us at :

www.starrising.in, www.sreplgroup.com



STAR RISING
ENERGY PVT. LTD.



SURGE ARRESTERS




AN OVERVIEW

In 2001 Our company has started to produce M. V. metal-oxide surge arresters in Jaipur, Rajasthan, INDIA. Since it was founded, STAR RISING is the leading company in energy sector in the production, marketing and sales of M. V. Surge arresters, it occupies a closed land area of 600 sq. mtr.

Our Working principles are based on high quality and customer satisfaction. STAR RISING has been working according to ISO 9001-2015 standards with respect to CERTIFICATE. Also our products are being manufactured according to IEC--60099-4 & IS 3070 Standards.

STAR RISING is working on research and development activities for the best products and expenses gained through 18 years in the Energy Sector. Our products are manufactured with advanced technology machines according to the quality system requirements off IEC 60099-4 & IS 3070 standards. All Surge arresters are routine tested I our High Voltage laboratories. Our Company has been offering the high quality with attractive prices to the esteemed customers. Also our aim is to be a symbol of high quality both for domestic and foreign energy sectors.

With our qualified technical personnel we are a closed to follower of technology and develop our working strategies according to modern life.

- 
- Medium Voltage Procelain Housing Metal Oxide Gapless Surge Arrestors
 - Low Voltage Polymer Housing Metal Oxide Gapless Surge Arrestors
 - Medium Voltage Polymer Housing Metal Oxide Gapless Surge Arrestors
 - High Voltage Polymer Housing Metal Oxide Gapless Surge Arrestors
 - Disconnectors

M.V. Porcelain Surge Arrester



M.V. Polymer Surge Arrester



M.V. Porcelain / Polymer Surge arresters are used to protect transformers and other equipments in station and distribution systems against the damage caused by atmospheric (especially lighting effects) and operational conditions.

Metal oxide type surge arresters without gaps are designed to prevent probable damages in the case of typical surges in energy systems while it has no negative effect on energy systems in normal operation voltage.

Low resistance to the surges in energy systems, therefore limits the over voltage.. Sufficient energy voltage (especially for steep current impulse).



L.V. Surge Arresters are used to protect low voltage AC networks against both, multiple atmospheric and switching over voltages as well as very fast Transients(VFT). L.V. surge arresters are suitable for the protection of apparatuses and rotating machines, for railway systems and other special applications. They can be used for both indoor and outdoor installation.

- Low Residual Voltage
- High Energy capacity
- High withstand against aging
- Long protection distance
- Stable U-I- Characteristics.



As a result of rare failures in surge arresters, short circuits might happen in energy lines. Problems may arise if surge arresters that failed due to short circuit are still connected to line when the system is loaded again.

Therefore failed surge arresters are disconnected and line is ensured to be operational in a short time by means of optional surge arrester separators.

Additionally, the failed surge arresters are distinguished easily from ground due to different color design..



Contact us for any Query



Star Rising Energy Pvt. Ltd.
Plot No.6, Road No.17, Vishwakarma Industrial Area,
Jaipur, Rajasthan - 302013 (INDIA)



ceo@starrising.co.in
md@starrising.co.in
geetsrepl@gmail.com



+91 - 141-4811200
+91 - 92518 00100
+91 - 94140 20656
+91 - 85020 06788

Visit us at :
www.starrising.in, www.sreplgroup.com



STAR RISING ENERGY PVT. LTD.

ENCLOSURES (SMC/DEEP DRAWN/ FABRICATED)

STAR RISING ENERGY PVT. LTD., is an **ISO 9001-2015** certified company and a prominent name in the domain of manufacturing and supply of excellent quality electrical products included SMC, DMC/BMC Compound, Isolators, Horn Gap Fuses, A. B Switches, Lightning Arresters , Drop Out Fuse, Spring Loaded Distribution Boxes, Meter Board, Danger Board, Plastic Molded Boxes, L.V. & M.V. switchgear , Automatic line Sectionalizer, Autorecloser, Load Break Switch, capacitor Switch & various Overhead Transmission Line materials.

ELECTRICAL ENCLOSURES

Thermoset composite materials exhibit excellent dielectric strength due to the network of cross-linked molecules that create a rigid structure, where molecules are held in place by chemical bonds. Compounds made with thermoset binders, therefore, have the ability to maintain both physical and electrical properties under mechanical loads during prolonged exposure to elevated temperatures.



OUR THERMOPLASTIC PRODUCTS

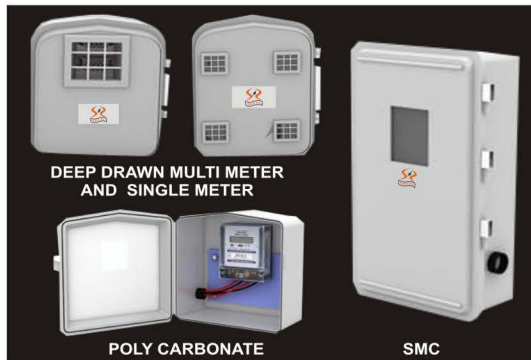
Also we have Introduced ourselves as a leading manufacturer of Engineering plastics products such as Electrical enclosures, Distribution Boxes, BPL Kit, Meter Boards Etc.

- Single piece moulded without any joints
- Concealed metal hinges
- Mounting screws fitted from inside
- Metal hardware for wire seal
- Adequate space for meter and cut-outs
- Light weight, yet strong
- Wide range for different applications
- Excellent Out door weather ability
- Rust proof, water proof, termite proof
- Withstands solar radiation and heavy rains.
- Excellent finish and dimensional consistence Maintenance free.
- Consistent quality and timely delivery to match pace of project



LTCT METER BOXES

The LTCT Meter Boxes Made From Mild Steel And Sheet Moulding Compound Are The Best Solution To Ensure Pilfer Proof Security To The Meter And Ct's. These Boxes Are With 2 Separate Compartments Which Have One Compartment For The 3 Ph., 4wire Energy Meter (adjustable) And The Other Is For Current Transformers And Has Separate Doors With Separate Locking Systems.



WHOLE CURRENT METER BOXES

The Utilities Sell Power To Generate The Revenues And To Perform That Most Important Task They Install Thb Meters At Consumer Level To Ensure The Proper Accountability And Hence Protection Of The Meters From Theft And Other Calamities Are Essential And Thus We Have A Huge Range Of Metering Enclosures For Single As Well As Multi Meter Options With State Of The Art Locking And Other Smart Features.

LT DISTRIBUTION BOXES FOR X'MERS

We Offer A Wide Range Of Lt Distribution Boxes Made Of Crca M.s. Sheet, S.s. Sheet And Sheet Moulding Compound And Are Manufactured With Various Process Of Fabrication. Deep Drawn & Compression Moulding As Per The Customer Requirement To Ensure The Complete Protection To The Transformers And Lv Side Of The Consumers With Distribution Of The Various Number Of Circuits, Various Options Are Available With Mccb's, Kit Kat Fuses, Switch Disconnectors And Fuse Links.



FEEDER PILLARS

Feeder Pillars Manufactured From Mild Steel, Stainless Steel & Sheet Moulding Compound As Per Customer Requirements Arc Used For Distributing And Managing Various Outgoing Circuits With 1 Or 2 Incoming With Hrc Fuse Links Or Kitkats On Outgoing Side And Option With Or Without Acb On The Incoming Side.

LT DISTRIBUTION BOXES FOR A.B.CABLES

A Junction Of Service Connections In Ab Cable Networks Are Managed Efficiently By The Lt Distribution Boxes With Many Options Such As Aluminum And Copper Busbars, Multi Cable Connectors With Spring Loaded Action And Lnkey Action With Are Specially Designed For Human Safety. These Boxes Are Available With Pole Clamps And Pole Straps. Material Offered : Mild Steel (fabricated And Deep Drawn), Stainless Steel, Galvanised Steel, Sheet Moulding Compound, Polycarbonate, Asa



MAJOR CUSTOMERS

- ABB Limited
- KLG systel Ltd.
- Angelique International (P) Ltd.
- Tata Projects Ltd.
- Kalpataru Power transmission Ltd.
- Godrej & Boyce Mfg. Co. Ltd.
- Megha Engineering & Infrastructures Ltd.
- Shyam Indus Power Solutions Pvt. Ltd.
- Vindhya Telelinks Ltd.
- L & T Ltd.
- Genus Power Infrastructure Ltd.
- Jyoti Structures Ltd.
- Aster Pvt. Ltd.
- Korea Electric Power Corporation
- AMRCL
- Gayatri Projects Ltd.
- KEI Industries Ltd.
- Vishwanath Projects Ltd.
- Skipper Electrical (India) Ltd.
- Rohini Industrial Electricals Ltd.
- RAMKY Infrastructure Ltd.
- Coastal Projects Limited
- Prime Electrical Ltd.
- Ashoka Buildcon Pvt. Ltd.



STAR RISING ENERGY PVT. LTD.

Contact us for any Query



Star Rising Energy Pvt. Ltd.
Plot No.6, Road No.17, Vishwakarma Industrial Area,
Jaipur, Rajasthan - 302013 (INDIA)



ceo@starrising.co.in
md@starrising.co.in
geetsrepl@gmail.com



+91 - 141-4811200
+91 - 92518 00100
+91 - 94140 20656
+91 - 85020 06788

Visit us at :

www.starrising.in, www.sreplgroup.com